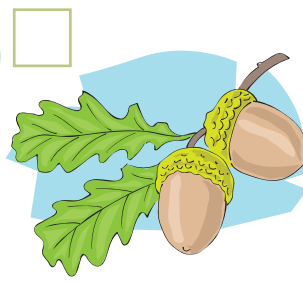




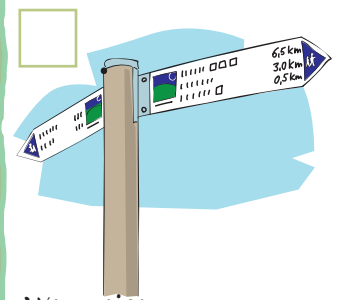
Tierspuren



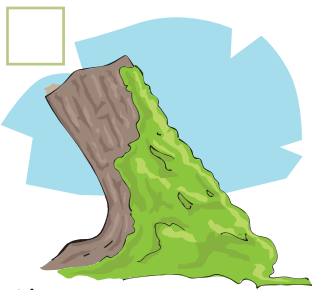
Pilze



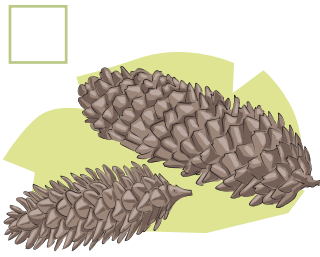
Eicheln



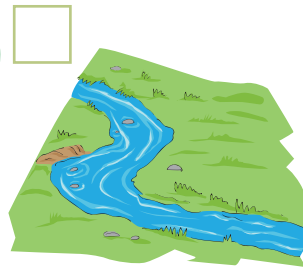
Wegweiser



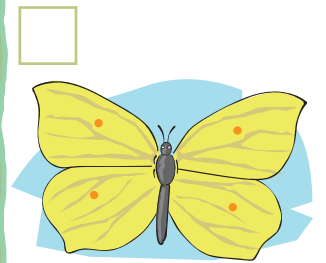
Moos



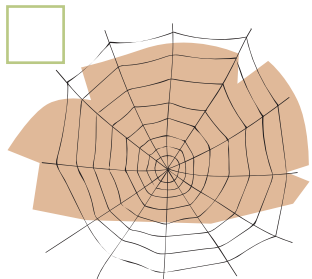
Zapfen



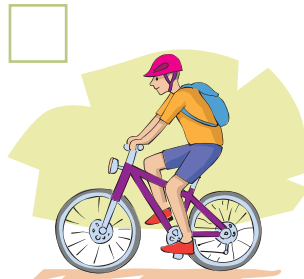
Bach



Schmetterling



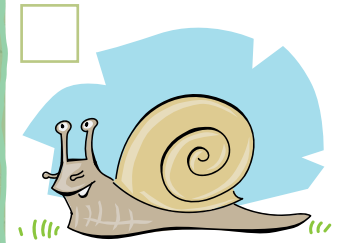
Spinnennetz



Radfahrer



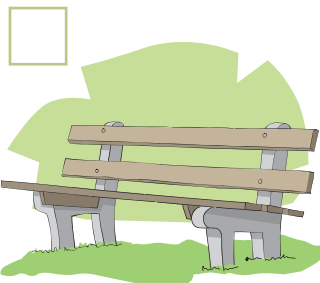
Feder



Schnecke



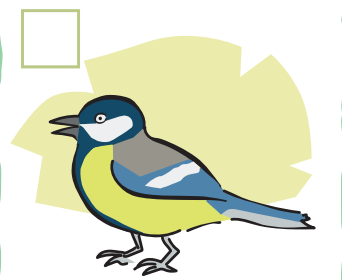
Käfer



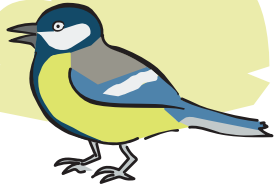
Bank



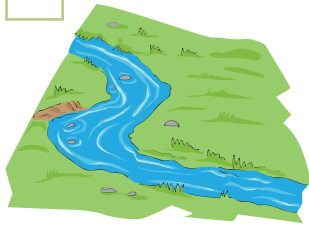
Hochsitz



Vogel



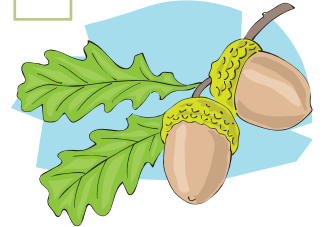
Vogel



Bach



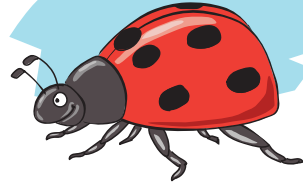
Pilze



Eicheln



Feder



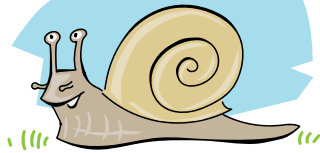
Käfer



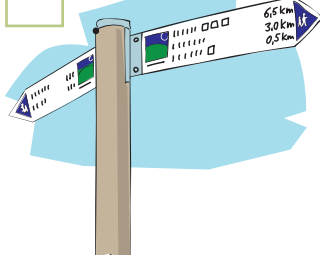
Löwenzahn



Tierspuren



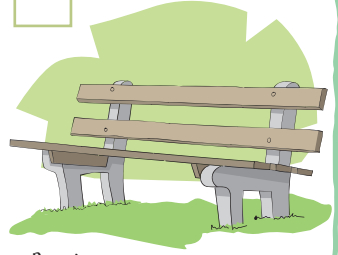
Schnecke



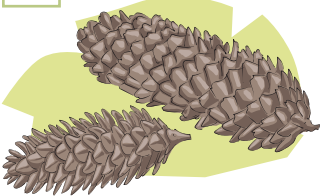
Wegweiser



Moos



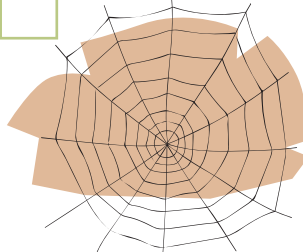
Bank



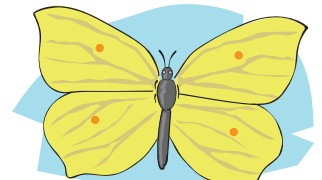
Zapfen



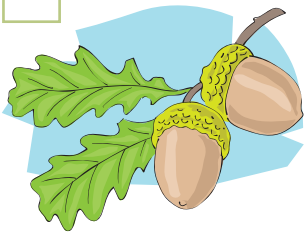
Hochsitz



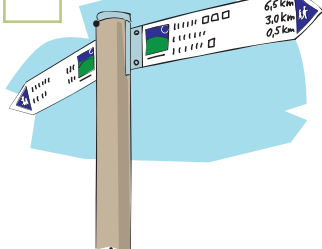
Spinnennetz



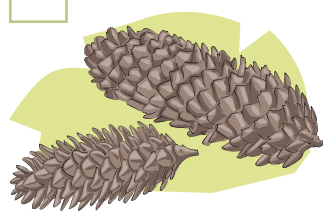
Schmetterling



Eicheln



Wegweiser



Zapfen



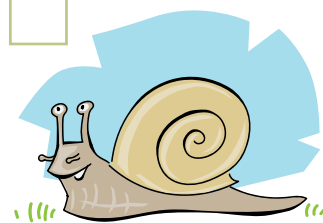
Moos



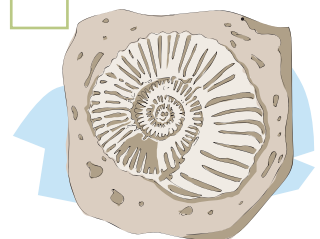
Hochsitz



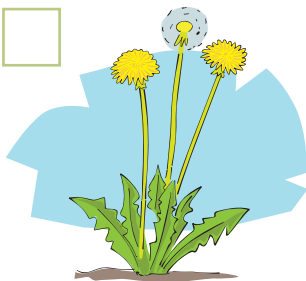
Feder



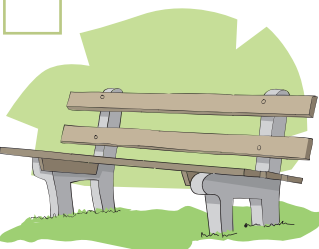
Schnecke



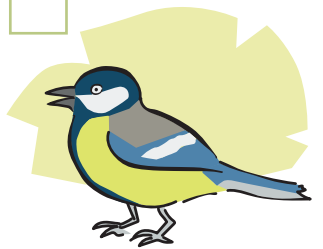
Fossil



Löwenzahn



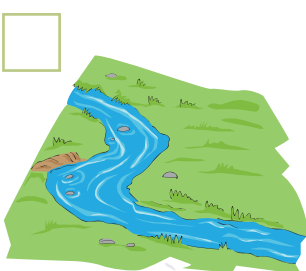
Bank



Vogel



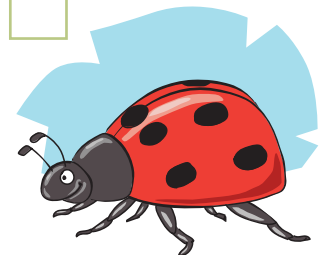
Wanderer



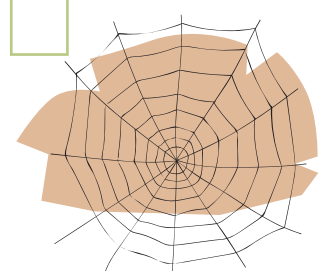
Bach



Pilze



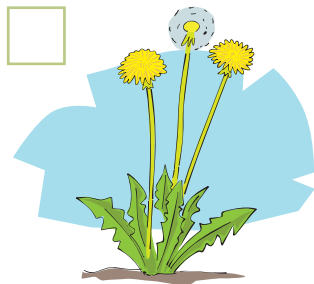
Käfer



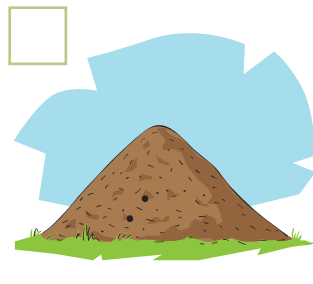
Spinnennetz



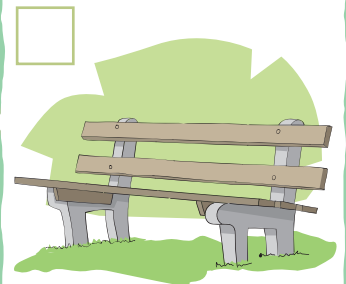
Hochsitz



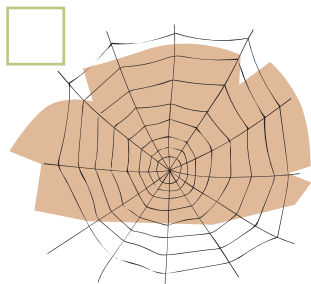
Löwenzahn



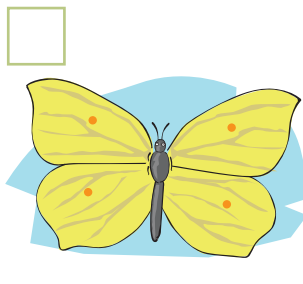
Ameisenhaufen



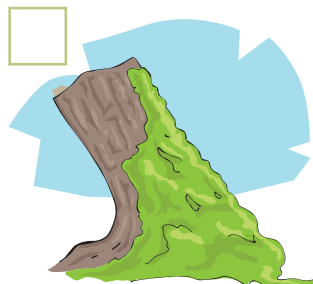
Bank



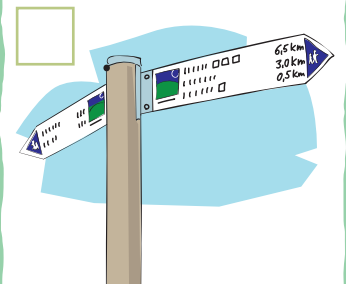
Spinnennetz



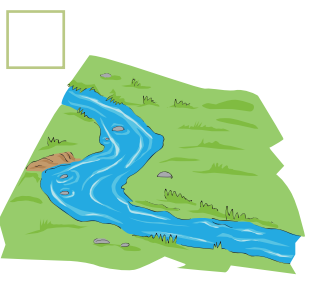
Schmetterling



Moos



Wegweiser



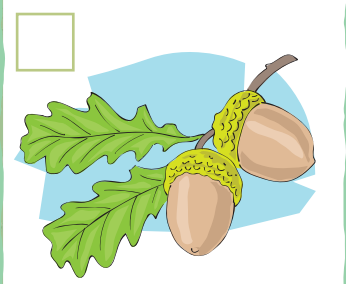
Bach



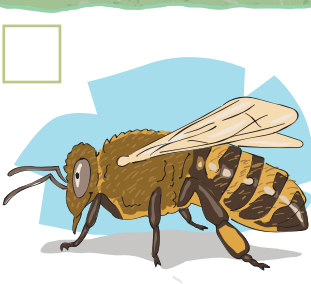
Tierspuren



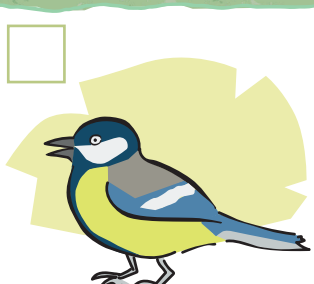
Käfer



Eicheln



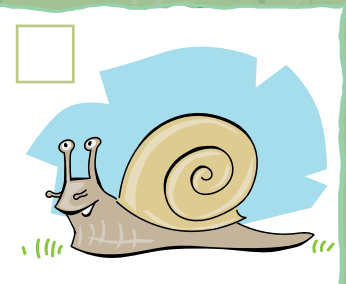
Biene/Insekt



Vogel



Feder



Schnecke

WANDER-BINGO

So geht's:

Alles, was du auf der Wanderung siehst, kannst du ankreuzen.

Sobald du vier der gesuchten Motive entdeckt hast und sie eine diagonale, vertikale oder horizontale Linie bilden, rufst du "BINGO". Wer zuerst eine Reihe voll hat, gewinnt.

Viel Spaß
beim Suchen
und Entdecken!

